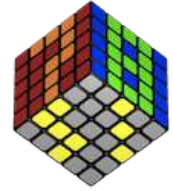
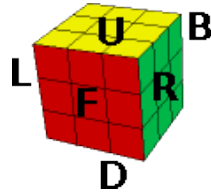


How to Solve the Rubik's Cube

by Shelley Chang (appropriated by Lucas Garron)



Notation



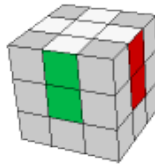
F = front	B = back
L = left	R = right
U = up	D = down

A letter by itself (e.g. F) means turn that face 90 degrees clockwise with respect to the center of the cube. A letter with an apostrophe (F') denotes a 90 degree counter-clockwise turn. A letter followed by the number 2 (F2) denotes 2 turns, i.e. a 180 degree turn.

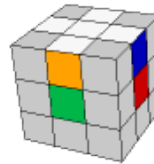
Part 1: First Layer Edges

Your first objective is to solve the four white edges, building a cross on your first layer as shown below. Note that each white edge piece has another color sticker on it. When the white cross is completed, this other color has to match the center piece it's adjacent to.

Your cross should look like this:



Not like this:

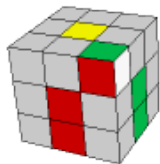


Once you have finished the cross, keep the white cross on the bottom face for the rest of your solve.

Part 2: First Layer Corners

Your next step is to complete the first layer by filling in the corners. Locate a corner piece that has a white sticker on it. There are four of them, and they can be found on the top layer or bottom layer.

If the corner piece is on the top layer, rotate U until it is directly above where it needs to go. Hold the cube so that this corner is at the UFR position. Now check the position of the white sticker. You have three possible cases:



R U R'



F' U' F



Doing R U2 R' or F' U2 F will reduce this to one of the above cases.

If the white corner piece is on the bottom layer, replace it with different corner piece from the top layer. The white corner piece will then be in the top layer and you can now deal with it using one of the cases indicated above.

Once you have done this with all four corners, you should be done with the first layer.

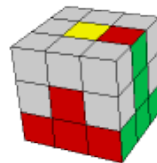
Part 3: Middle Layer Edges

Notice that the middle layer consists of just four edge pieces that need to be solved. An easy way to identify a middle layer edge is to look for edge pieces that have no yellow stickers on it.

If the middle layer edge is on the top layer, rotate U until it's matched with an adjacent center sticker. Hold the cube so that its target position (where you want to place that edge) is at the FR position. You have two possible cases:



U R U' R' U' F' U F



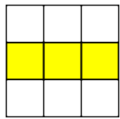
U' F' U F U R U' R'

Once you're finished with all four middle layer edges, you are done with the first two layers.

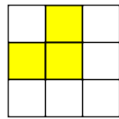
For the last layer, diagrams will show a top-down view of what your top layer looks like. You will still be executing the algorithms with the top layer as the U face.

Part 4: Last Layer Cross

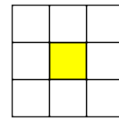
Your first objective is to orient the last layer edge pieces so they all have yellow facing up, forming a yellow cross on the last layer. The orientation of your last layer edges has three possible cases:



$F R U R' U' F'$



$F U R U' R' F'$

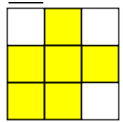


Do both of the above algorithms

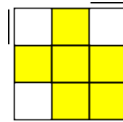
Part 5: Last Layer Corner Orientation

Complete the last layer orientation by orienting the corners so that they all have yellow facing up. You only need to learn two algorithms for this. In fact, it's really only one algorithm, because one is simply the mirror image of the other. In the diagrams, the dashes on the sides represent which side the yellow sticker is on.

Case 1: Exactly one corner is already correctly oriented (has yellow sticker on top). Determine which case it matches and apply the appropriate algorithm.



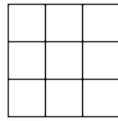
$R U R' U R U^2 R'$



$L' U' L U' L' U^2 L$

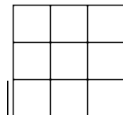
Case 2: Exactly two corners are correctly oriented. Hold the cube so that the UFL corner needs to be rotated counter-clockwise (there should be a yellow sticker on the front face; see diagram) and do $R U R' U R U^2 R'$ to bring you to Case 1.

Hold the cube like this.



Case 3: No corners are correctly oriented. Hold the cube so that the UFL corner needs to be rotated clockwise (there should be a yellow sticker on the left face; see diagram) and do $R U R' U R U^2 R'$ to bring you to Case 1.

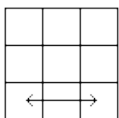
Hold the cube like this.



If you end up with exactly three corners correctly oriented, your cube is in an unsolvable state.

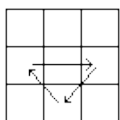
Part 6: Last Layer Permutation

You're almost done! Now all you have to do is position all the pieces where they need to go. Let's start with the corners. There's only one algorithm you need here, the two corner switch:

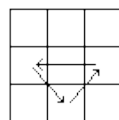


$R' F R' B^2 R F' R' B^2 R^2 U'$

You may have to do this algorithm more than once (e.g. if two opposite corners need to be switched). Once all your corners are correctly positioned, you can move on to the edges:



$F^2 U R' L F^2 R L' U F^2$



$F^2 U' R' L F^2 R L' U' F^2$

Note that these two algorithms are identical except for the direction in which to turn U. It's easy enough to remember: it's U to cycle edges clockwise and U' to cycle them counterclockwise.

You may have four edges that need to be positioned, in which case do the 3 edge cycle twice as needed.